

Event Space

- Exhibitions
- Performances
- Public / Private screenings.



SPACE

Mezzanine

- Workshop & Course space
- Private / Public meetings.



TO

Gallery 1

- Exhibitions
- Public / Private meetings.

Gallery 2

- Exhibitions
- Public / Private meetings.



CREATE



Event Space

- **Walls only exhibition**

- Capacity of 100 people
- Weekly rate: £294
- Monthly rate: £1020

- **Performance/exhibition with stage/show**

- With gallery seating
- Capacity of 80 people (seated)
- 120 (standing)
- Daily rate: £480

- **Event Hire**

- Capacity of 80 people
- Hourly rate: £42 (min 2 HR)
- Daily rate: £336

*all prices include VAT





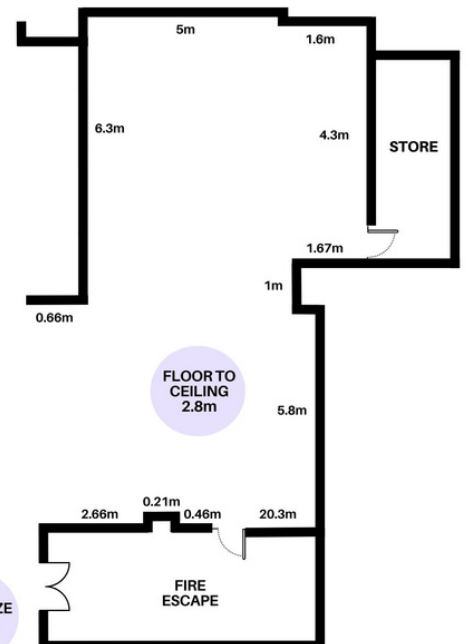
Gallery 1

- Gallery 1 is situated on the ground floor, adjacent to Made in Stirling.
- JUN - AUG reserved for Made in Stirling summer market
- NOV- DEC reserved for Made in Stirling Christmas market.
- For EVENTS during these times see details of our Event space and Gallery 2

- capacity of 80 people (standing)
- Daily rate: £336
- Monthly rate: £1020

*all prices include VAT

Gallery 1





Gallery 2

- Gallery 2 is situated on the ground floor, at the end of Made in Stirling.
 - Perfect space for exhibitions and workshops.
 - At the back of the shop, but still secluded enough.
- capacity of 80 people (standing)
 - Daily rate: £336
 - Monthly rate: £1020

*all prices include VAT



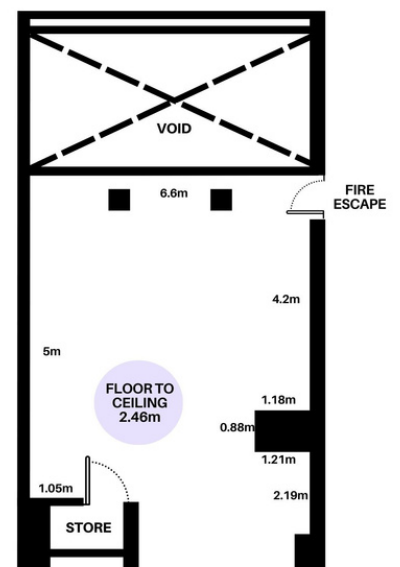


Mezzanine

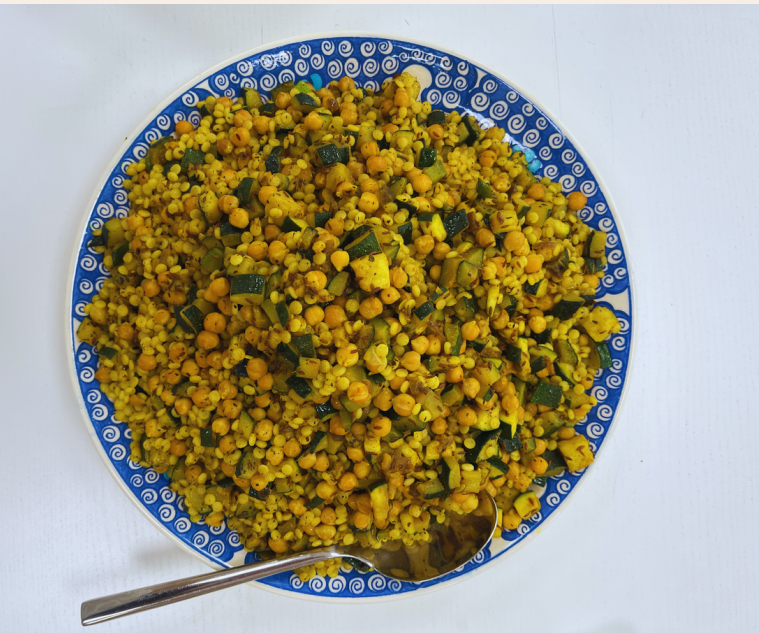
- The mezzanine on the first floor overlooking the entrance of Made in Stirling is perfect for hosting courses, workshops, and public & private events.
- See the 'supplementary' for additional support and catering options.

- Capacity of 16 people (seated)
- Minimum 2 hours
- Hourly rate: £24
- Daily rate: £168
- **Evening hire available**
 - Hourly rate: £34.8

*all prices include VAT



SPACE SIZE
33m²



Supplementary

We offer a range of technical support as well as catering for any events that further Arts & Culture within Central Scotland, and provide an opportunity to use a well established venue.

• Technical support options

- Projector & Screen: £66
- Laptop: £24
- PA system £48
- Sound engineer £40/hr (min 2 hours)

• Catering

- Tea, coffee & water per head £3
- Tea, coffee & cake per head (min 12 people) £6

• Food options

- Seasonal buffet (min 7 people) £18
- Cheese & Charcuterie board (min 6 people) £20.40
- Soup & sandwiches (min 7 people) £12
- Fresh bowls with sides (min 7 people) £14.40-19.20
- Bring your own bottles £6 per cork
- Cash bar hire £120

*all prices include VAT



HIRE US FAQ'S

Can I come and look at the spaces?

YES! Our events & operations manager Alister would love to give you the tour! Email alister@creativestirling.org to communicate a time! You might also catch him on your next visit to Made in Stirling.

Do you have disability access and facilities?

We do. Gallery 1 is accessible on the ground floor and can easily be reached. Both the event space and the mezzanine are accessible via an elevator, and other facilities such as our toilets are also wheelchair friendly. All of our staff are always eager to lend a helping hand if needed.

Can I bring in my own food & drink

We can organise catering to meet any budget, or recommend the best places to eat in town if you needed a break during a course or workshop.

Can I bring alcohol into the building?

Yes, you are allowed to bring your own drinks to the event. We would then charge corkage, or alternatively we can provide you with a cash bar.